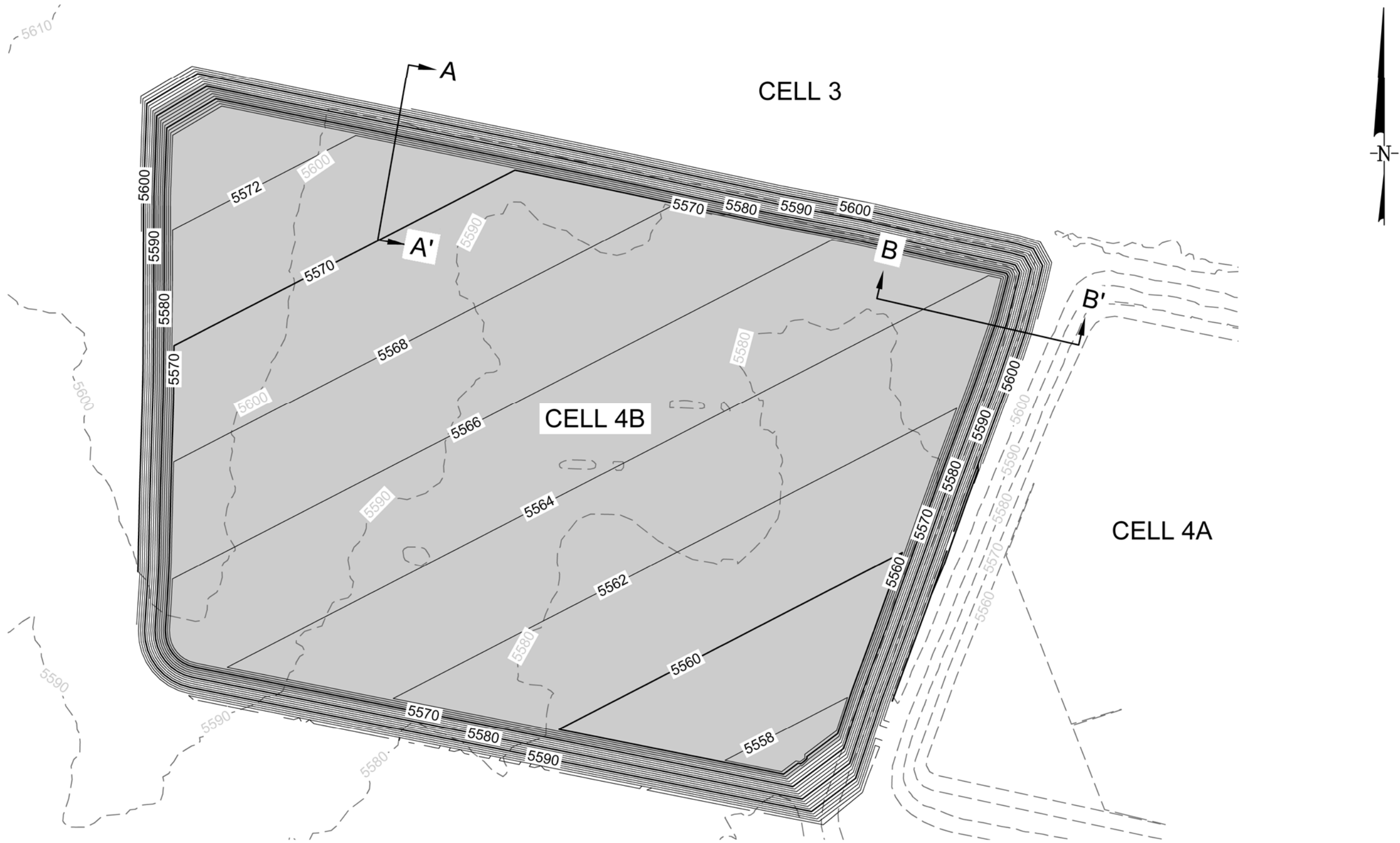



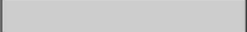


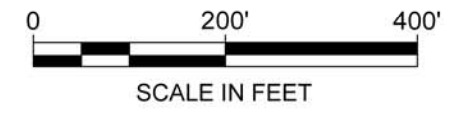
P:\PRJ\SDCadd\CADD\SC0349\PlanSet\_Cell\_4b\FIGURES\INTERROGATORY ROUND 2\cell\_4b\_profiles.dwg




### LEGEND

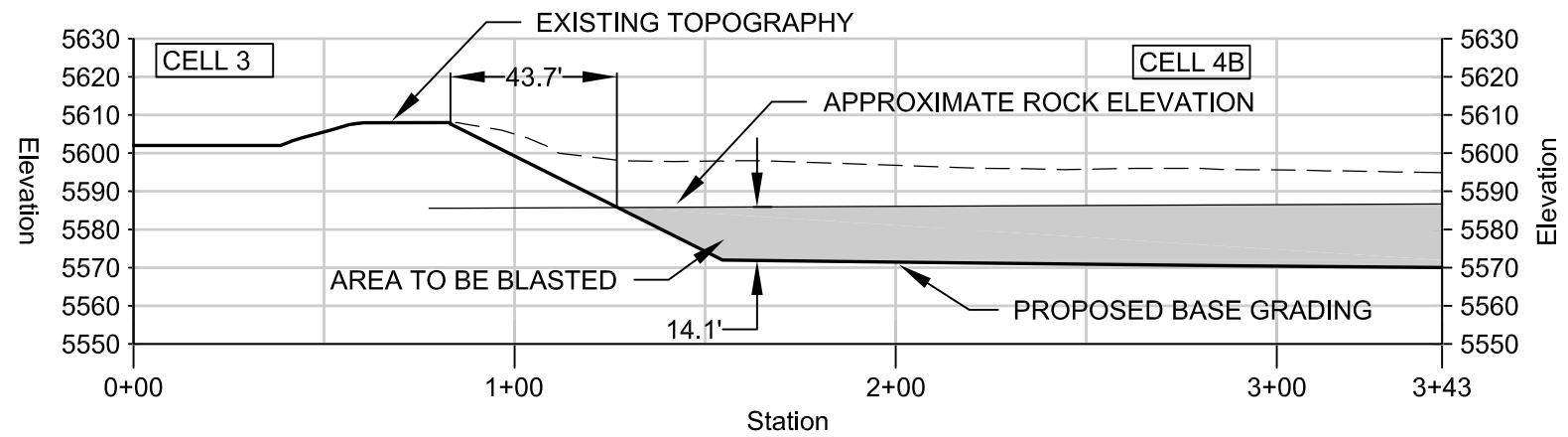
-  MAJOR EXISTING TOPOGRAPHY CONTOUR
-  MAJOR PROPOSED BASE GRADING CONTOUR
-  MINOR PROPOSED BASE GRADING CONTOUR
-  LIMITS OF BLASTING

### PLAN - CELL 4B

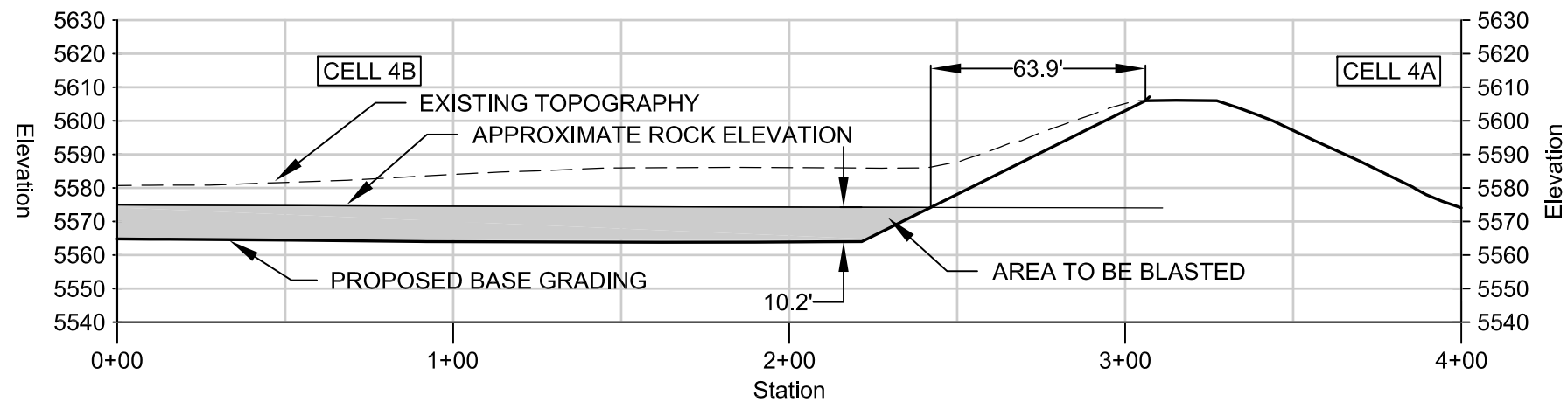


|   |                    |                    |
|---|--------------------|--------------------|
| INTERROGATORY ROUND 2 - BLASTING LOCATIONS<br>WHITE MESA MILL CELL 4B<br>BLANDING, UTAH |                    |                    |
|    | DATE: AUGUST 2009  | FIGURE<br><b>1</b> |
|   | PROJECT NO. SC0349 |                    |

P:\PRJ\SDCadd\CADD\SC0349\PlanSet\_Cell\_4b\FIGURES\INTERROGATORY ROUND 2\cell\_4b\_profiles.dwg



SECTION A-A'



SECTION B-B'



LEGEND

 AREA TO BE BLASTED

INTERROGATORY ROUND 2 - BLASTING PROFILES  
WHITE MESA MILL CELL 4B  
BLANDING, UTAH

Geosyntec  
consultants

DATE: AUGUST 2009  
PROJECT NO. SC0349

FIGURE  
2