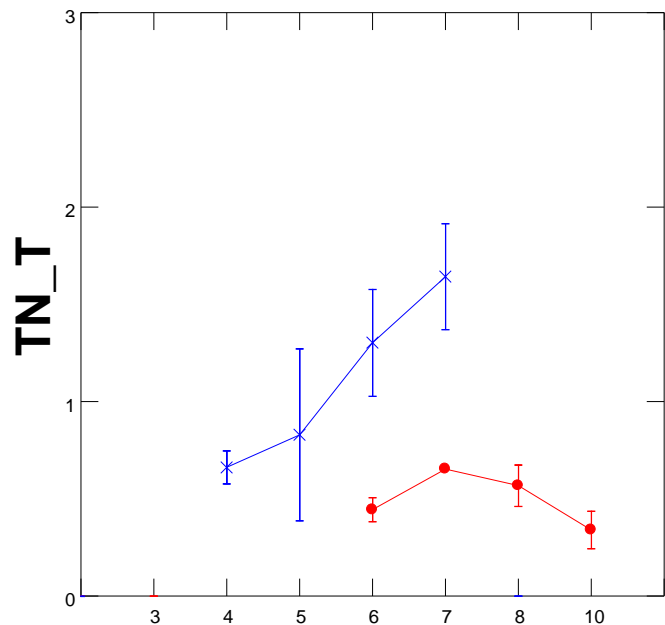
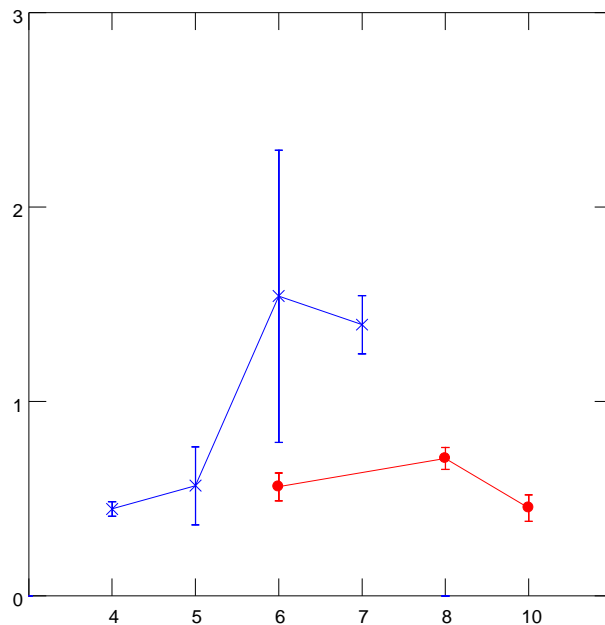


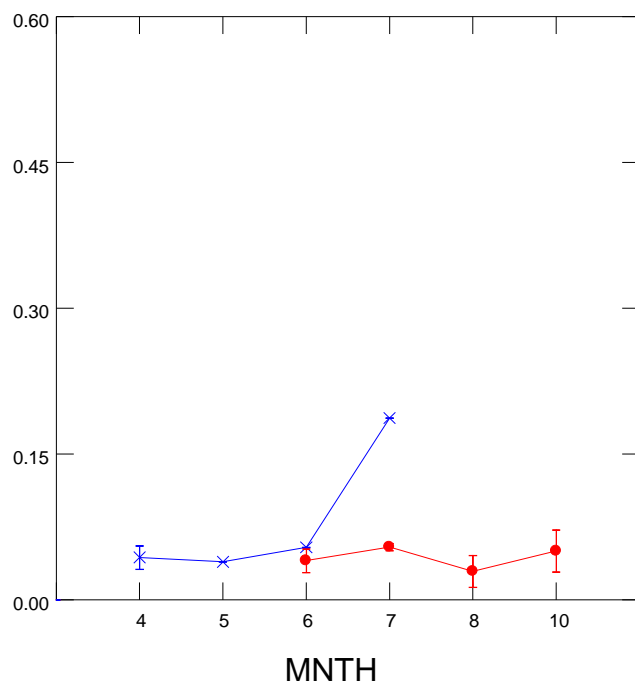
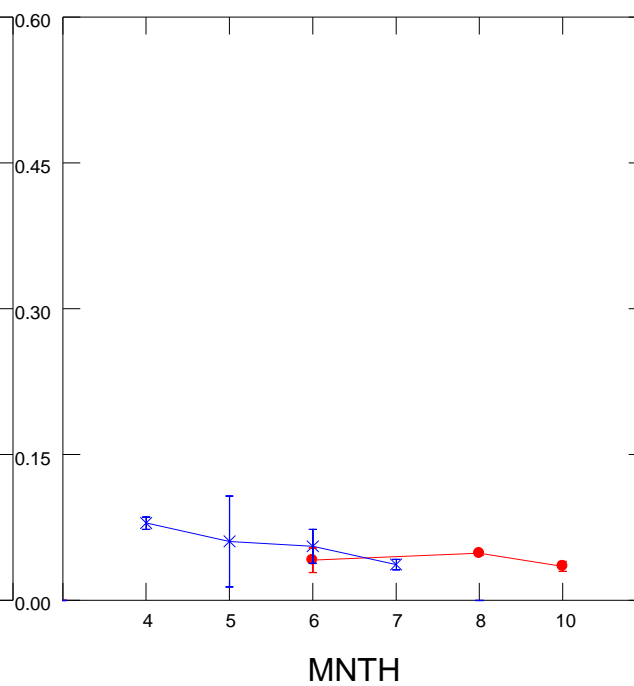
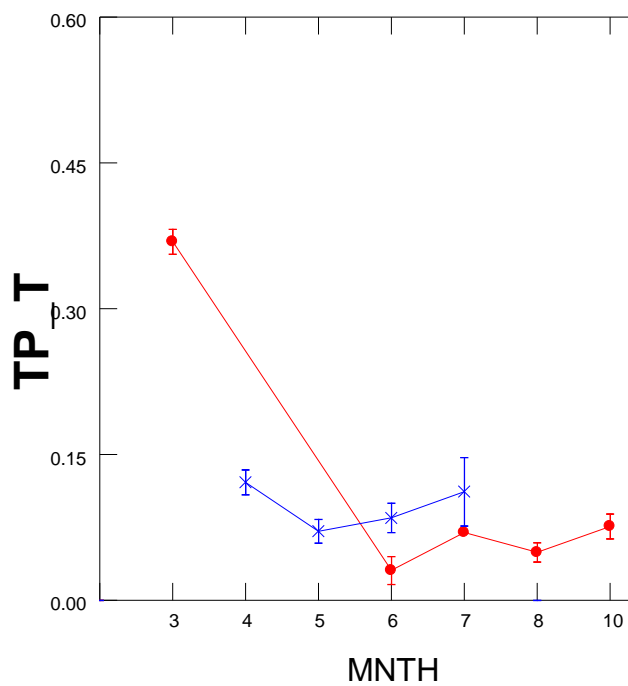
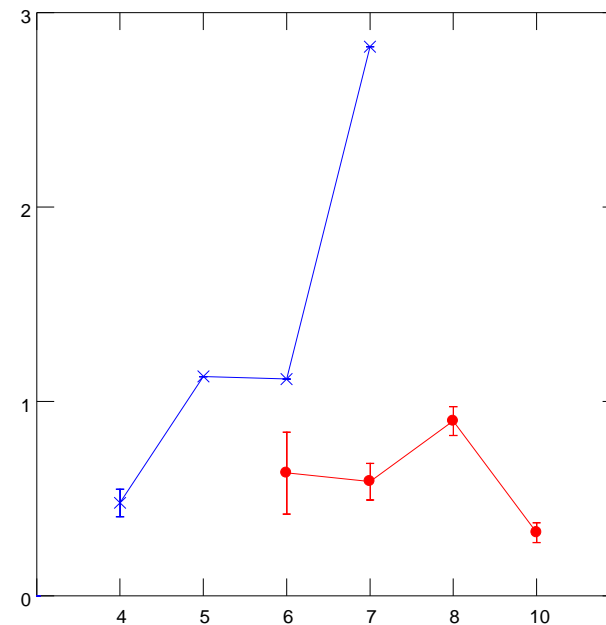
Sites 1 - 4

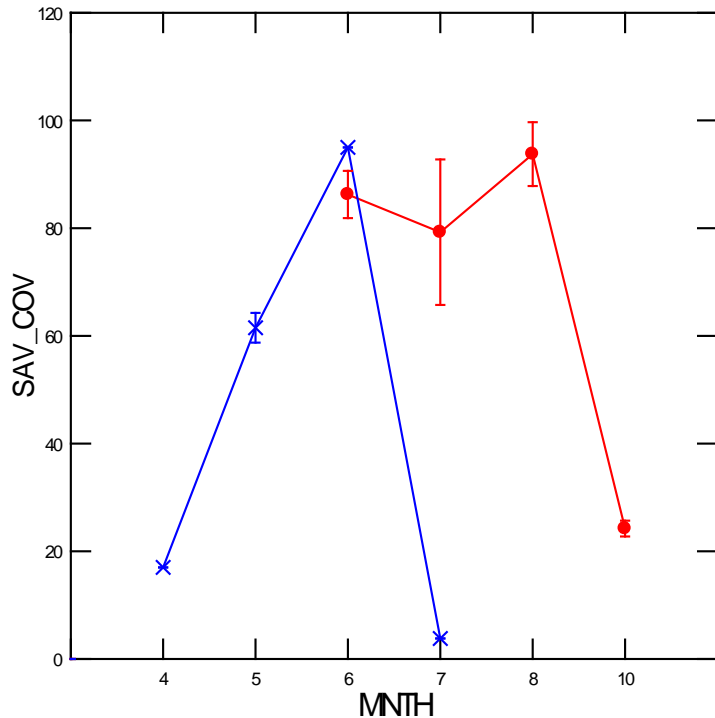
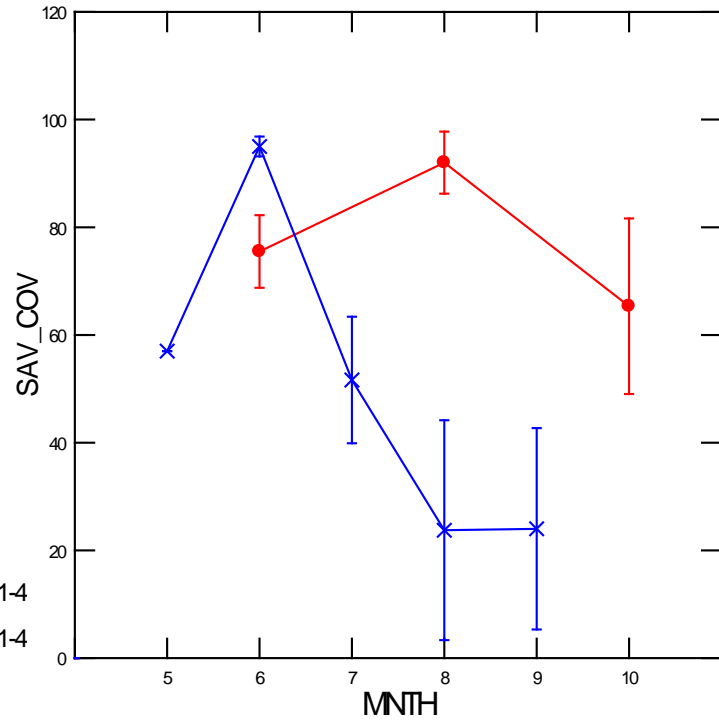
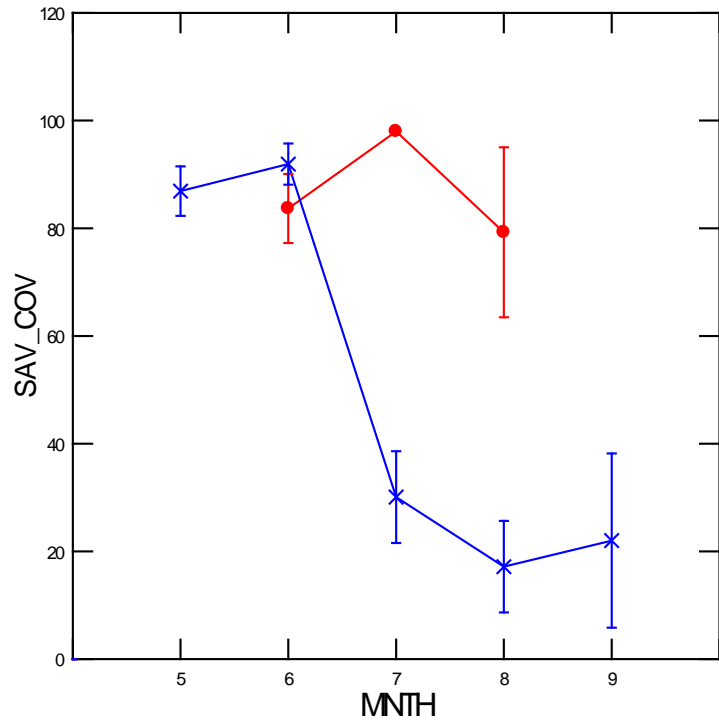


Sites 5 - 8

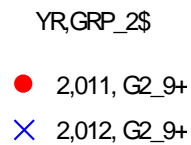


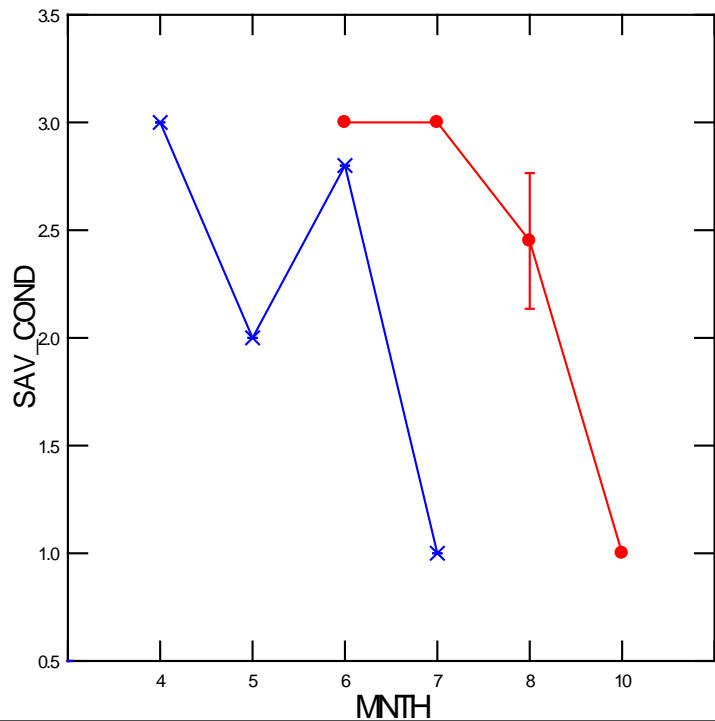
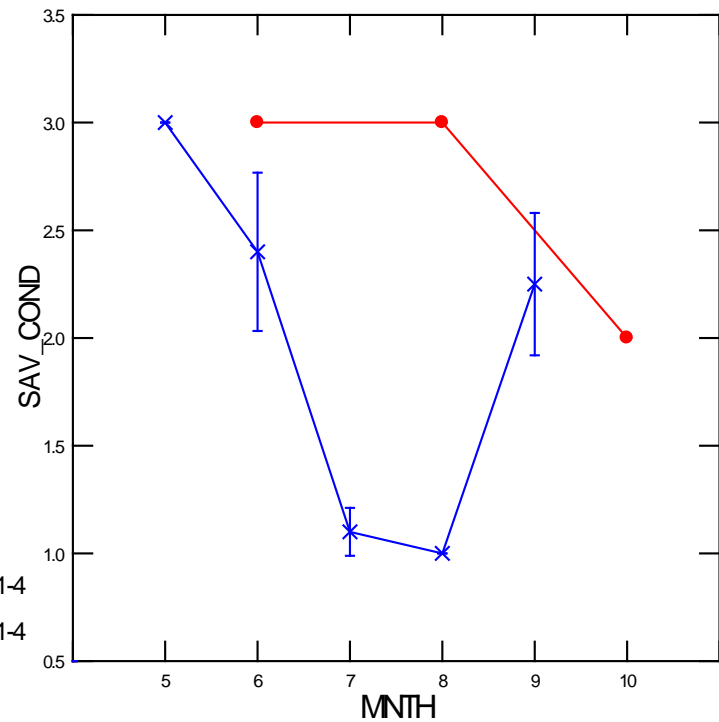
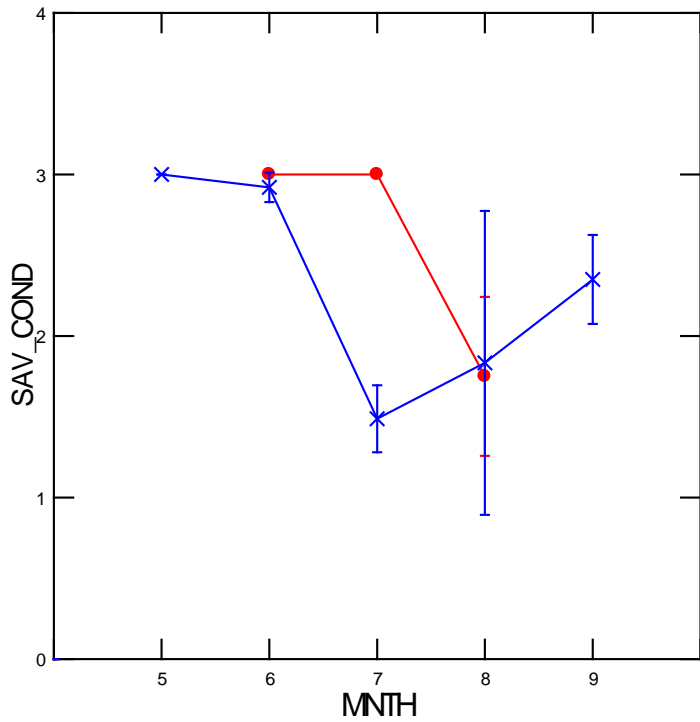
Sites 9 - 12





- SAV greater cover in 2011 vs. 2011
- Similar peak Cover, but 2011 extends longer into summer – 2012 begins to crash after June
- Evidence for leveling out (and rebound?) in Aug/Sep ?

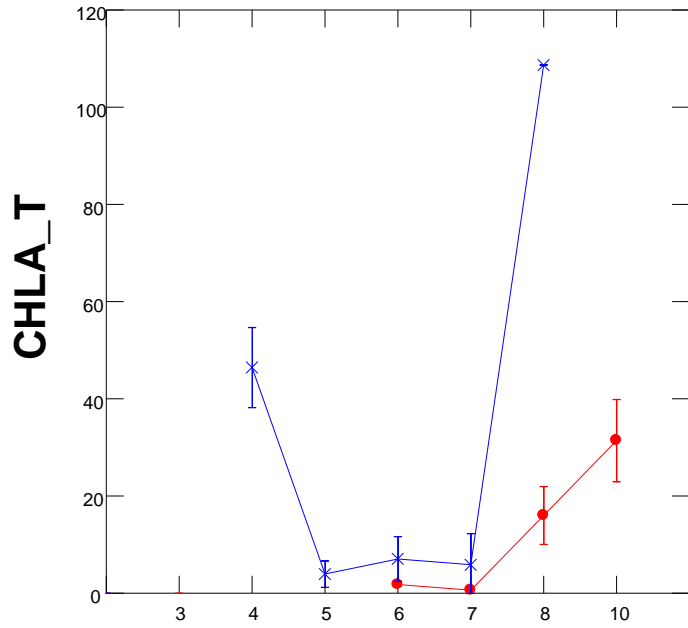




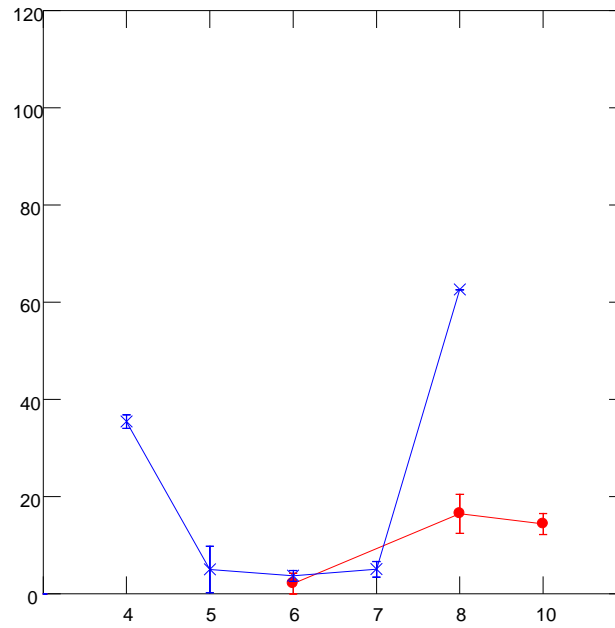
- Healthy SAV condition (vigorous growth) lasts longer in 2011 vs. 2012
- Evidence for rebound in 2012 in September?

Grp 2: OW transect

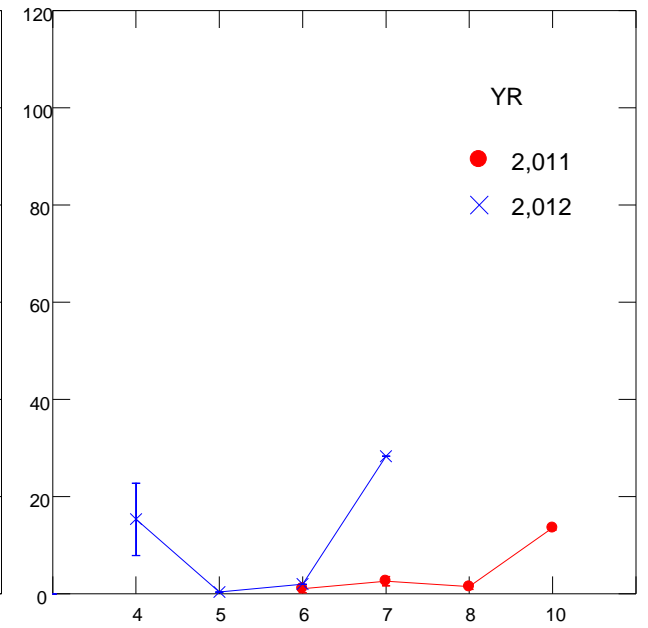
Sites 1 - 4



Sites 5 - 8



Sites 9 - 12



SAV_COV

